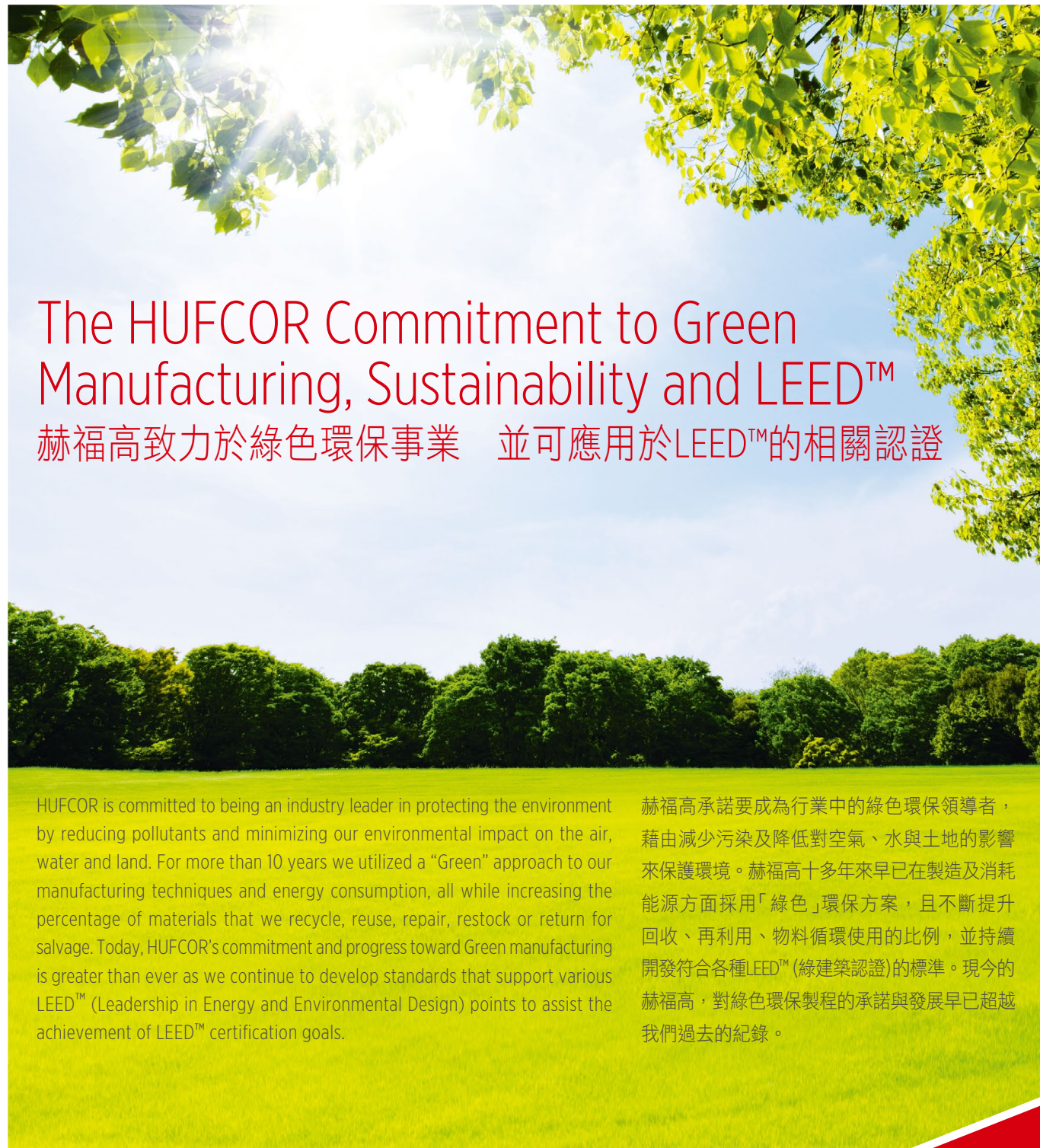


# Glasswall

## AL5000G/600G/GF/GL

Partitions • Operable | Vertical Lift | Glasswall | Automatic



### The HUFCOR Commitment to Green Manufacturing, Sustainability and LEED™

赫福高致力於綠色環保事業 並可應用於LEED™的相關認證

HUFCOR is committed to being an industry leader in protecting the environment by reducing pollutants and minimizing our environmental impact on the air, water and land. For more than 10 years we utilized a "Green" approach to our manufacturing techniques and energy consumption, all while increasing the percentage of materials that we recycle, reuse, repair, restock or return for salvage. Today, HUFCOR's commitment and progress toward Green manufacturing is greater than ever as we continue to develop standards that support various LEED™ (Leadership in Energy and Environmental Design) points to assist the achievement of LEED™ certification goals.

赫福高承諾要成為行業中的綠色環保領導者，藉由減少污染及降低對空氣、水與土地的影響來保護環境。赫福高十多年來早已在製造及消耗能源方面採用「綠色」環保方案，且不斷提升回收、再利用、物料循環使用的比例，並持續開發符合各種LEED™ (綠建築認證)的標準。現今的赫福高，對綠色環保製程的承諾與發展早已超越我們過去的紀錄。

 Design & Technology Developed by HUFCOR in the USA  
設計及技術來自美國赫福高



HUFCOR Hong Kong - Asia Pacific headquarters

Unit 2501-03 & 05, 25/F The Octagon, 6 Sha Tsui Road, Tsuen Wan, New Territories, Hong Kong  
T: (852) 2688 0912 F: (852) 2688 0896 E: hongkong@hufcor.com

HUFCOR Macau

T: (853) 6363 1775

All rights reserved. No part of this publication may be reproduced, stored in any retrieval system, or transmitted in any form or by any means, electronic, mechanical, photocopying, recording, or otherwise without the publisher's prior written permission.

保留所有權利。未經出版者事先書面同意，本出版物任何部分均不得複製，不得儲存於任何檢索系統，或以任何形式或方法如電子、書寫、複印、錄製等進行傳播或發佈。



Glass-R1-0321





## Glasswall AL5000G & 600G 玻璃屏風



Glasswall 600G & 5000G are the double-glazed operable partitions combining the transparent aesthetic as well as excellent acoustic performance. By bringing daylight into every partitioned room, transparent glass creates a bright and stylish environment to your space and it is also an eco-friendly solution to save lighting power and cost. With the double glass panel system acoustic performance is further enhanced to up to STC 50. Characterized with its welded heavy-duty galvanized steel frame, 600G Glasswall is highly rigid and durable. While with improved design on the frame structure, 5000G Glasswall shows maximum clear view and is easy to operate. A colored powder coat finish on the aluminum and glass border can be upgraded to cater different design requirements. When protection against light and glare is required, the system can be enhanced through integration of venetian blinds or by installing smart glass, which can also turn your room to a private room.

玻璃屏風 600G 及 5000G 是雙玻式的活動屏風，符合視線通透的審美標準和具有出眾隔音效果的優點。透明玻璃把日光引進每個房間，使室內環境更加明亮，同時也可節省能源及成本，更加經濟環保。而雙玻式的玻璃屏風更可滿足 STC 50 的隔音需求。600G 屏風框架由鍍鋅鋼材機械焊接而成，使屏風整體結構更加堅固耐用。而 5000G 玻璃屏風的框架經過優化設計，使得玻璃可視範圍更加的寬大，同時也更容易操作。鋁料及玻璃邊緣可選擇以焗漆方式噴上不同的顏色，迎合客戶多樣化的要求。若裝上內置百葉簾或調光玻璃，不但可遮擋亮光，更可提升房間的私穩度。

### Feature 特點

- Double-glazed 雙層玻璃
- Quick-Set™ 快速設置密封操作系統
- Highly rigid with 2mm welded heavy-duty galvanized steel 堅固耐用的框架由2mm 鍍鋅鋼材機械焊接而成
- Energy Saving 節約能源



## Glasswall GF Designer Series 玻璃屏風



Hufcor's GF Designer Series operable glasswall was developed with a designer low-profile frame and high performance, single-glaze glass to meet four key goals, including industry leading clear-view, maximum daylighting possible, designer visual aesthetics, and the ultimate in space management flexibility.

赫福高 GF 系列玻璃屏風是基於滿足四個關鍵目標，包括行業領先的清晰視野，最大可能的天然採光，設計師的視覺審美，以及空間管理的極致靈活而開發設計的超薄和高性能的单片玻璃屏風。

### Feature 特點

- Designer Clear-view 視野清晰
- Best-in-class sound management 優越的隔音性能
- Innovative pass-door design 創新的門中門設計
- Designer hardware and aesthetics options 多款美學設計配件以供選擇
- Energy Saving 節約能源





# Frameless Glasswall GL Designer Series

## 無框GL玻璃屏風



Hufcor's GL Designer Series operable glasswall combines a frameless, single-glaze glass with designer low-profile rails to deliver industry leading clear-view, maximum daylighting, visual aesthetics, and ultimate flexibility in managing your space.

赫福高GL系列玻璃屏風由無框的單片玻璃與超薄的頂底部鋁橫料組合而成，以實現行業領先的清晰視野，最大可能的天然採光，視覺審美，以及空間管理的極致靈活。

### Feature 特點

- Designer Clear-view 視野清晰
- Designer hardware and aesthetics options 多款美學設計配件以供選擇
- Variety of glass options 多類型玻璃以供選擇
- Energy Saving 節約能源



# Product Overview

## 產品概覽

### Designer Series Global G系列產品

Specification Overview 產品規範概覽	AL5000G	600G	GF	GL			
Acoustic Ratings * 隔音系數	STC 46 or 48	STC 48 or 50	STC 33 or 37	N/A			
Max Height (m) 最大高度(米)	3.6	3.6	3.6	3.6			
Max Opening Widths (m) 最大展開寬度(米)	Unlimited 無限	Unlimited 無限	13.7	Unlimited 無限			
Panel Configuration 屏風輪子結構	Omni (Single) 多向式	Omni (Single) 多向式	Omni (Single) / Paired 多向式 / 單向式	Omni (Single) 多向式			
Acoustic Seals / Sweeps 隔音機動撐 / 頂底膠	With top and bottom mechanical seals and sweep ; 25mm top and bottom clearance 頂底機動撐及頂底膠配合25mm的頂底虛位	With top and bottom mechanical seals and sweep ; 25mm top and bottom clearance 頂底機動撐及頂底膠配合25mm的頂底虛位	With Sweep ; 25mm top and bottom clearance 頂底膠配合25mm的頂底虛位	With Brush ; 25mm top, 19mm bottom clearance 頂底毛條配合25mm頂虛位及19mm底虛位			
Pass Doors / Pivot Doors 門中門 / 固定門	Optional 可選	Optional 可選	Optional 可選	Optional 可選			
Lever Closure 伸縮板	Optional 可選	Optional 可選	Optional 可選	N/A			
Handle & Floor Locks 門把手及地鎖	Optional - master key prep, core cylinder key, thumb turn & pin 可選 - 萬能鑰匙, 鎖芯鑰匙, 旋轉開關及地針	Optional - master key prep, core cylinder key, thumb turn & pin 可選 - 萬能鑰匙, 鎖芯鑰匙, 旋轉開關及地針	Optional - master key prep, core cylinder key, thumb turn & pin 可選 - 萬能鑰匙, 鎖芯鑰匙, 旋轉開關及地針	Optional - master key prep, core cylinder key, thumb turn & pin 可選 - 萬能鑰匙, 鎖芯鑰匙, 旋轉開關及地針			
Track / Stacking Options 軌道 / 藏板間選項	Omni 多向式	Omni 多向式	Omni or Paired 多向式或單向式	Omni 多向式			
Standard Frame Finishes 邊框顏色	Clear Anodized ** 銀白氧化	Clear Anodized ** 銀白氧化	Clear Anodized ** 銀白氧化	Clear Anodized ** 銀白氧化			
Glass Types 玻璃類型	8 + 10mm Tempered Standard 8 + 10mm 厚鋼化玻璃	10mm Tempered Standard + 10mm Laminated Standard 10mm 厚鋼化玻璃 + 10mm 夾層玻璃	10mm Tempered Standard 10mm 厚鋼化玻璃	11mm Laminated Standard 11mm 夾層玻璃	12mm Tempered Standard 12mm 厚鋼化玻璃	12mm Laminated Standard 12mm 夾層玻璃	12mm Tempered Standard 12mm 厚鋼化玻璃
Hanging Weights 屏風重量	62.1 kg/m <sup>2</sup>	67.1 kg/m <sup>2</sup>	70 kg/m <sup>2</sup>	70.6 kg/m <sup>2</sup>	31.7 kg/m <sup>2</sup>	36.1 kg/m <sup>2</sup>	

\* Tested according to either ISO 140-3, ASTM E90 or ISO 10140-2 standard for sound ratings. 根據 ISO 140-3, ASTM E90 or ISO 10140-2 的標準進行隔音測試。

\*\* Can be PVDF coated in different colors. 可噴塗為其他顏色。

### Glass Option 玻璃選項

Glass Options 玻璃選項	Description 描述
Tempered Low Iron 鋼化超白玻璃	Complete Visual Clarity 完全清晰透明
Clear Tempered 鋼化玻璃	Standard Clarity 清晰透明
Clear laminated 夾層玻璃	Laminate for super sound management 用於更高隔音管理要求
Switchable Privacy Glass 調光玻璃	Available for 600G, 5000G & GF only 僅適用於600G、5000G和GF產品

Please contact HUF COR representative for other glass offers. 如需採用其他玻璃，請聯繫赫福高相關人員。



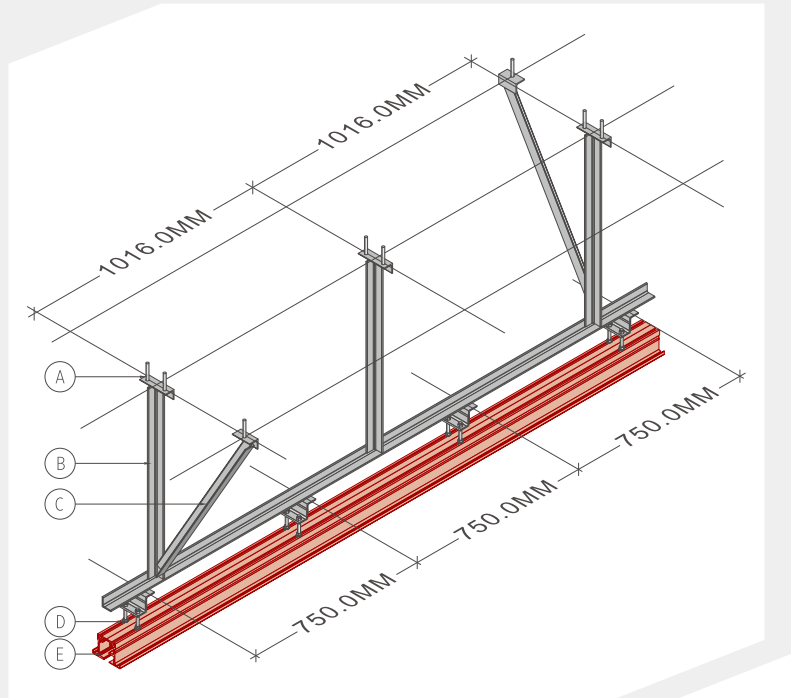
# Track Systems

## 軌道系統

A high quality track system ensures that HUF COR partitions will operate smoothly for years to come and assist in the quick set-up and storage of panels. All HUF COR tracks have been rigorously tested for a minimum of 100 miles (161 km), approx. 14 years of usage cycle time. Job requirements vary, which is why HUF COR offers a wide selection of tracks to meet your operating requirements.

我們高品質的軌道系統能確保赫福高屏風順暢運行多年，並能快速地進行屏風的放置與收藏。所有的赫福高屏風路軌都經過嚴格的性能測試，確保屏風至少運行100英里(161公里)，約14年的使用期限。赫福高有多種路軌以供選擇來滿足各種工程需求和您的營運所需，這也是我們的專利設計在行業中被反覆模仿的原因。

- (A) Anchor Bolt 爆炸螺絲
- (B) Vertical Angle Iron 垂直角鐵
- (C) Sway Angle Iron 斜拉角鐵
- (D) Hanger Rod 連接螺桿
- (E) Aluminum Track 鋁合金路軌



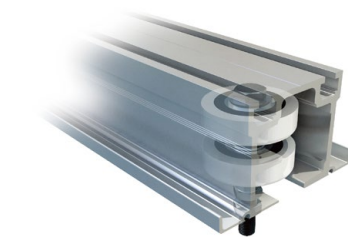
## Omni-Directional Panels 多向式屏風

Dual wheel trolleys that negotiate 90° turns, through X, L, and T intersections. Two carriers are provided per panel. Each carrier has two horizontal counter-rotating wheels that roll (not slide) in the track. Each wheel has precision-ground bearings, encased with Delrin™ for quiet operation. Carriers easily negotiate square or angled corners without switches.

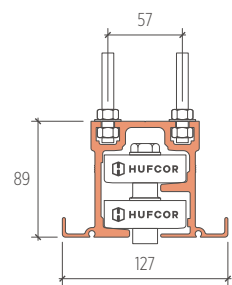
每片多向式屏風配置的雙滑輪在通過X型、L型及T型駁口時可90°轉彎。每個滑輪配有兩個水平反向旋轉輪在路軌中轉動(而不是滑動)。每個滑輪都有精密的內部軸承，外部有聚合材料的保護輪套來實現靜音操作。滑輪可順暢地在路軌方形或尖角轉彎處通行而無需開關控制。

### TYPE 36 36型路軌

HUF COR's track and carrier system is patented in US 赫福高生產的路軌滑輪系統已在美國獲專利認證

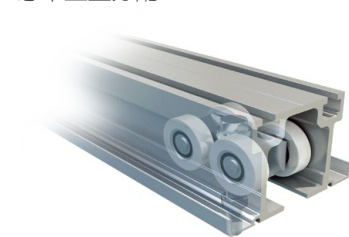


Weights up to 1000lbs (455kg) per panel 每片屏風最大懸吊重量可達455公斤

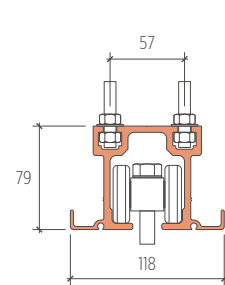


### TYPE 40 40型路軌

Resilient mounted body for quiet operation and load distribution 具備安裝彈性的滑輪路軌系統可實現靜音操作以及合理的懸吊重量分配



Weights up to 900lbs (408kg) per panel 每片屏風最大懸吊重量可達408公斤



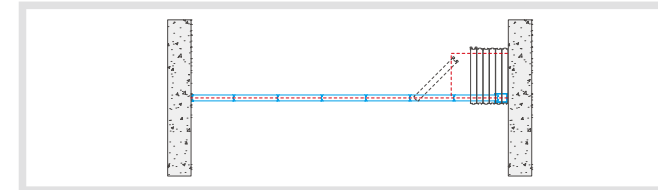
# Operable Partitions Types

## 活動屏風類型

# Why HUF COR?

## 為甚麼選擇赫福高?

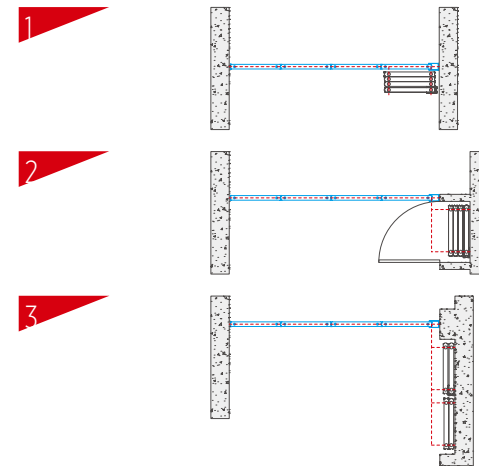
### Omni-Directional Panels 多向式屏風



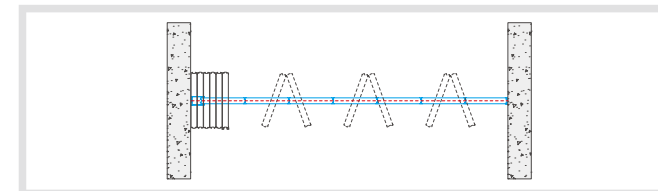
Omni-directional panels provide the ultimate flexibility to your operations because each individual panel can easily turn around corners and move to alternate locations or remote storage. Therefore, many different storage layouts can be created to fit your floor design and layout.

多向式屏風極致地體現了空間使用上的靈活性。每片屏風可簡易快速地轉向、以不同角度設置在不同的位置或移動到距離較遠的藏板間，因而可創造出多種藏板間佈局設計。

#### Storage Layout Options 藏板間佈局設計

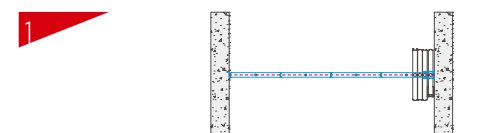


### Paired Panels 單向式屏風



When remote storage is not required, the center-hung panels hinged in groups of two or three, are the ideal solution for quicker and easier set up, than omni-direction panels. Optional hinging is available to accommodate moldings or other decorations. Acoustical ratings are the same as omni-direction Panels. 當無需藏板間時，可選用配置單輪中心懸掛以鉸鏈連接兩片或三片為一組的單向式屏風，相較於多向式屏風而言是一種可快速、簡易設置的理想空間解決方案。選配的鉸鏈可容納邊角線或其他裝飾面。隔音系數與多向式屏風相同。

#### Storage Layout Options 藏板間佈局設計



### Partitions Must Control Sound

We test our products in our sound laboratory to make certain they meet or exceed our published acoustical ratings. The laboratory is certified by the National Voluntary Laboratory Accreditation Program (NVLAP) and, like our ISO certification, we undergo regular inspection to make certain we adhere to their strict regulations.

### Renovation and Repair

Not only do we provide new products, we also offer retrofit service for HUF COR products and those manufactured by others. Contact your local HUF COR representative for a free assessment of your needs.

### Worldwide Availability

HUF COR's US manufacturing facility is located at our headquarters in Janesville, Wisconsin. HUF COR US, China, Hong Kong, Macau, Malaysia and Taiwan are providing our Glasswall 600G product in their respective market for flexible space management. In addition to the Glasswall 600G product, other HUF COR partition lines are also available in Australia, Bangladesh, Brazil, Canada, China, Finland, France, Germany, Hong Kong, India, Indonesia, Japan, South Korea, Mexico, Malaysia, Macau, New Zealand, Philippines, Russia, South Africa, Singapore, Sri Lanka, Spain, Taiwan, Thailand, United Arab Emirates and Vietnam. Check our website for contact details in the respective location.

### 活動屏風必須隔音

赫福高是中國地區唯一擁有正規聲學測試實驗室的屏風品牌，我們在自己的聲學實驗室測試產品以確保能滿足或超出對外公布的隔音測試系數。我們的聲學測試實驗室是經由「美國國家義務計劃」(NVLAP)認可的，就像我們的ISO證書，是嚴格遵守規定經受定期檢查並通過的。

### 翻新和維修

我們不僅提供新產品，而且對赫福高及其他製造商的屏風產品也提供改裝翻新服務。如果您有需要請與當地的赫福高公司聯繫，我們將為您提供免費的需求分析。

### 全球化經營

赫福高總部坐落於美國威斯康辛州的占斯維爾。赫福高美國、中國、香港、澳門、馬來西亞及台灣市場均可提供靈活空間管理的玻璃屏風600G產品。除玻璃屏風600G產品外，赫福高同時向澳洲、孟加拉、巴西、加拿大、中國、芬蘭、法國、德國、香港、印度、印度尼西亞、日本、韓國、馬來西亞、澳門、新西蘭、菲律賓、墨西哥、俄國、南非、新加坡、斯里蘭卡、西班牙、台灣、泰國、阿拉伯聯合酋長國和越南市場提供其他屏風系列產品。赫福高不單是具有百年歷史的活動隔音屏風產品製造商，更是屏風專業品牌中的佼佼者。多年來，一直穩佔全球屏風市場的領導地位，在同業中始終保持領先的優勢。我們的銷售點遍布全球，客戶可瀏覽公司網站選擇赫福高公司或經赫福高授權的經銷商購買產品。